



# GAT MONTHLY MEMBERSHIP PROGRESS REPORT

Results as of: 12/31/2022

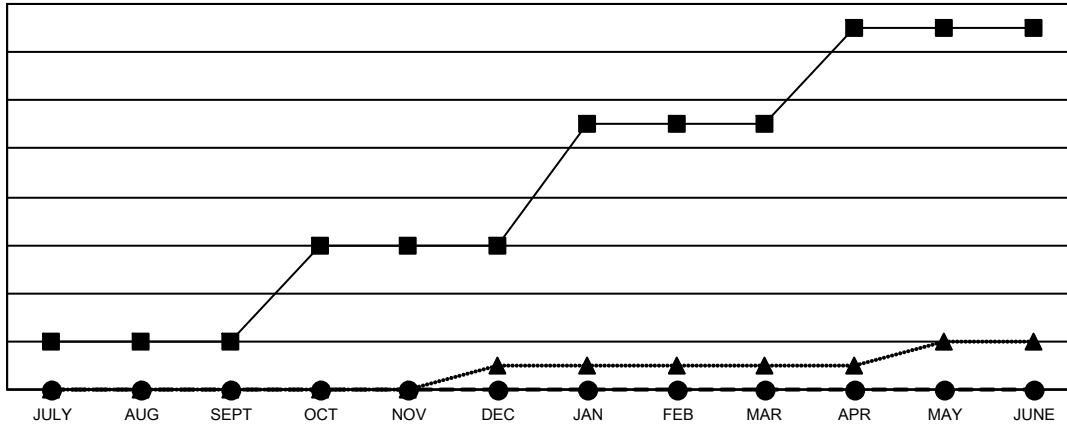
Multiple District 1

LOCATION: ILLINOIS

Clubs			
RESULTS FOR 2022-2023			
QUARTER	NEW CLUB GOAL	NEW CLUBS	DROPPED CLUBS
JULY/AUG/SEPT	2	0	4
OCT/NOV/DEC	4	0	2
JAN/FEB/MAR	5	0	0
APR/MAY/JUNE	4	0	0

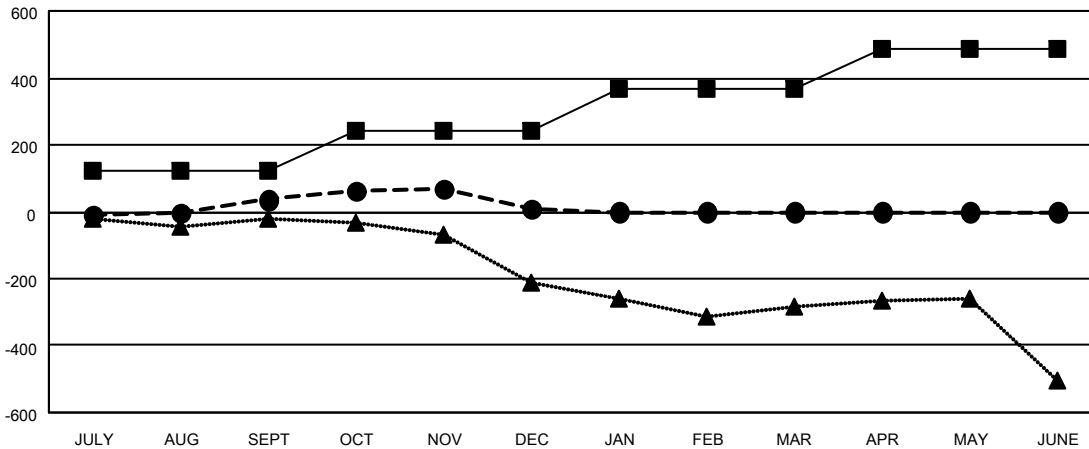
Members			
RESULTS FOR 2022-2023			
QUARTER	MEMBER GROWTH NET GOAL	MEMBER GROWTH ACTUAL	DROPPED MEMBERS ACTUAL (including transfers)
JULY/AUG/SEPT	122	376	299
OCT/NOV/DEC	122	324	320
JAN/FEB/MAR	121	0	0
APR/MAY/JUNE	124	0	0

GOALS AND ACTUAL NEW CLUBS CUMULATIVE



- CURRENT YEAR GOALS FOR NEW CLUBS
- CURRENT YEAR ACTUAL NEW CLUBS
- ▲- LAST YEAR ACTUAL NEW CLUBS

GOALS AND ACTUAL MEMBERS CUMULATIVE



- MEMBER GROWTH NET GOAL
- MEMBER GROWTH ACTUAL
- ▲- LAST YEAR MEMBERSHIP ACTUAL

<b>DROPPED CLUBS: 6</b>	190 CLUBS OF 448 ADDED 1 OR MORE NEW MEMBERS	<b>GENDER DISTRIBUTION</b>
<b>DROPPED MEMBERS</b>	<a href="#">CLICK HERE FOR CUMULATIVE MEMBERSHIP DATA</a>	MALE 8,790 (71.47%)
DECEASED 78		FEMALE 3,507 (28.51%)
CLUB CANCELLED 34		NON BINARY 0 (0.00%)
OTHER 509		PREFER NOT TO ANSWER 2 (0.02%)
<b>TOTAL 621</b>		<b>TOTAL FAMILY UNIT MEMBERS 1,758</b>
		FAMILY MEMBERS PAYING HALF DUES 907